



Long-term forestry research has provided a clear understanding of how Loblolly Pine has adapted from New Jersey to Texas to local climatic conditions. Loblolly Pine varies in its ability to withstand cold temperatures depending on where the original parent trees were from.

This research examined the survival and vigor of loblolly seed sources, or provenances, planted across the South in a variety of conditions with a range of temperatures. US Forest Service scientists then developed planting zones to which these provenances are well-adapted. These zones for forestry are a modification of USDA Plant Hardiness zones you may have seen at your local garden center store.

The most important climatic variable for pine is the average annual minimum temperature.

With some areas of the Southeast experiencing very cold weather the last few winter months, choosing the right climate-adapted pine tree for your area has never been more important.

Extensive research has shown that seedlings can survive and grow well in locations up to 5 degrees colder than the seed source origin.

In other words, Loblolly Pine seed sources from warmer climates can grow faster as long as they are planted in an area that is not more than 5 degrees colder from the origin of the seed source.

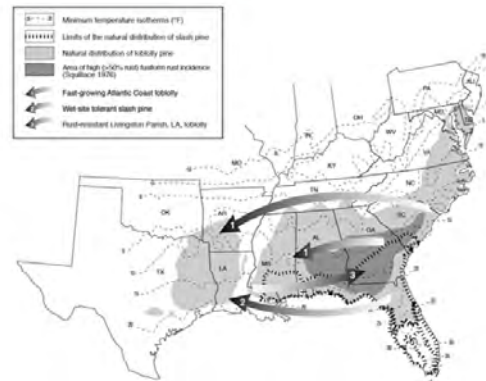


Figure 1 - Major seed source movement guidelines for the Great Depression. Natural distribution of species adapted from Chickfield and Latta (1964); minimum temperature isotherms from USDA (1996).



Failure to follow these seed source movement guidelines can lead to catastrophic loss.

Planting the wrong seedlings in the wrong geographic area threatens initial seedling survival.

Still, even if they survive, the cold temperatures can limit tree root growth due to a lack of adaptability to cooler soil temperatures.

In recent years, reports of survival problems in northern North Carolina and Virginia suggest that seedling families were planted in areas with temperatures too low for them.

Our Reforestation Advisors use ArborGen's proprietary FamInfo database with the Annual MinTemps for every county where loblolly pine can be planted. ArborGen has specific families well-tested for adaptability for these colder areas. You can be sure that your Reforestation Advisor will select the appropriate seedling families adapted to the minimum temperatures occurring in your area to survive and grow well.

Look at this [published article by R.C. Schmidtling with the United States Forest Service on "Southern Pine Seed Sources"](#) for more information on why it is critical to know the annual minimum temperature your seedlings can tolerate before planting.

Long-term forestry research has provided a clear understanding of how Loblolly Pine has adapted from New Jersey to Texas to local climatic conditions. Loblolly Pine varies in its ability to withstand cold temperatures depending on where the original parent trees were from.

This research examined the survival and vigor of loblolly seed sources, or provenances, planted across the South. US Forest Service scientists then developed planting zones to which these provenances are well-adapted. These zones for forestry are a modification of USDA Plant Hardiness zones you may have seen at your local garden center store.



Article by Jason Watson,
Director, US Sales

Welcome Justin Birch!



Please join us in welcoming Justin Birch to ArborGen as our new president and CEO!

Justin succeeds [Andrew Baum](#), who will retire on June 19th but will continue in a consulting capacity to facilitate a seamless leadership transition.

Justin is an experienced executive with significant agricultural sector exposure and a strong operations, finance, and strategy background. Previously he was the Chief Financial Officer of Prima® Wawona in California, an industry leader in the fresh fruit category.

Before this role, he served in various operations, finance, sales, and strategy positions at Prima® Wawona and at Materra Farming, an investor-owned farming company.

Justin and his wife, Ellie, have three children – eight-year-old Ariana, five-year-old Remington, and three-year-old Duke. Justin grew up in Indiana and is a big fan of the Indianapolis Colts. In his "spare" time, he enjoys fly-fishing, shooting, and woodworking.

"My family and I are very excited to be coming to South Carolina and being part of the community here. ArborGen is a great company doing important and beneficial work for our society and the forestry industry, and I couldn't be more pleased to join such a great organization. I look forward to meeting our customers and working with a great team of forestry professionals focused on delivering landowners the best seedling genetic options available."



I would like to thank all of you for trusting ArborGen with your reforestation needs over my time at ArborGen. We know that you have choices and are grateful we have earned your trust. As I retire I know I am leaving an organization that puts its customer's needs first. We aim to be a reforestation partner, not just a seedling vendor, and that team at ArborGen offers an unparalleled level of genetics, seedling quality, reforestation advice and service.

I am completely confident that Justin will continue to maintain our customer focus and commitment to your success. His time in the agricultural and tree fruit industries, his integrity and business experience makes him my ideal successor. I have no doubt that he will allow ArborGen to continue to provide the products and service you have come to expect and deserve.

Thanks again for your confidence in ArborGen. You are the reason we exist!

— Andrew Baum

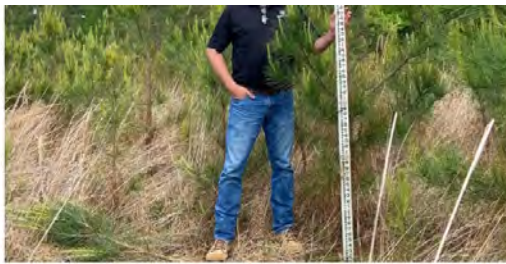
Client Results

8'-10' MCP® 2.0
@ 3rd Growing Season
Meridian, MS

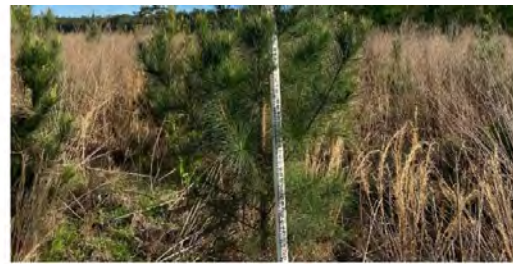


10.5' MCP®
@ 3rd Growing Season
Slaughter, LA





8'-10' MCP® 2.0
@ 3rd Growing Season
Meridian, MS



10.5' MCP®
@ 3rd Growing Season
Slaughter, LA

[See More Client Results](#)

[Click here for the previous edition of TreeLines.](#)

Need a trusted partner to guide the way? Get in touch with a Reforestation Advisor to explore your options!



Paul Jeffreys, Ph.D.
Western Tennessee,
Alabama, and Mississippi
205-712-9582

[See More](#)



Austin Heine
North Carolina and Virginia
910-660-3209

[See More](#)



Shannon Stewart
Eastern Texas, Southern
Louisiana
936-239-6189

[See More](#)



Kylie Burdette
South Carolina
864-650-4454

[See More](#)



Jason Cromer
Florida Gulf Coast, South
Alabama, Georgia
229-310-0648

[See More](#)



Greg Hay
Arkansas, Northern
Louisiana, and Oklahoma
501-350-4217

[See More](#)



Jason Watson
Director, U.S. Sales
404-840-7489

[See More](#)

FIND AN ADVISOR OR NURSERY



■ Blenheim, SC Nursery

GET IN TOUCH

2011 Broadbank Court
Ridgeville, S.C. 29472

888.888.7158

info@arborgen.com



QUICK LINKS

- [Find a Reforestation Advisor](#)
- [ArborGen TreeLines - News & Updates](#)
- [Join Our Team](#)
- [Helpful Resources](#)
- [About ArborGen](#)
- [In the News](#)
- [Press Releases](#)

- Taylor, SC Nursery
- Bellville, GA Nursery
- Shellman, GA Nursery
- Selma, AL Nursery
- Bluff City, AR Nursery
- Bullard, TX Nursery
- Livingston, TX Distribution Point
- Jasper, TX Nursery



[Request Catalog](#)

- [Search Website](#)

[Get Treelines](#)