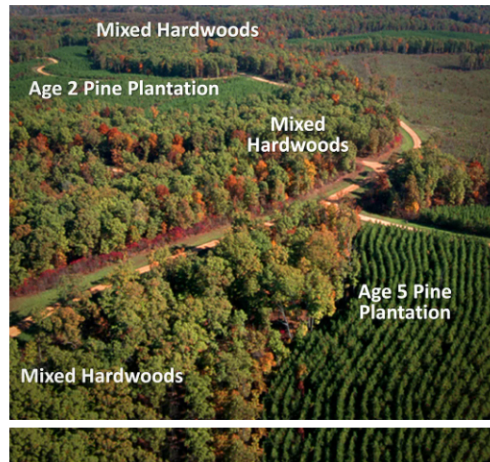




You would have to live under a rock if you are a timberland owner and have not heard about greenhouse gases and climate change. As a landowner myself, I hear these buzzwords on the airwaves and at meetings, and sometimes I just wonder, “How does this impact me?” or “How can I capitalize on this opportunity?”

Carbon is one of the elements included in the group of greenhouse gases and the one on which timberland owners can have an impact. Research has shown that capturing carbon in forests can help slow carbon buildup in the atmosphere.



As forest landowners, when we plant seedlings on our property, we are planting little factories that remove carbon from the atmosphere and convert it into stored carbon. In other words, we’re planting many little carbon “sequestrators” or factories, improving our air and the environment. This carbon is measured by metric tons of carbon dioxide equivalent or an offset/credit. These offsets/credits have value and can be sold by the landowner.

Landowners can participate in these markets but must show that they defer harvest for a period. Thus, they agree to maintain the carbon stored throughout the agreement’s life. As with all forest management, it is advised to work with a professional forester to learn about the details. Always ensure the guidelines match your management objectives and practice sustainable forestry.

Multiple states and the federal government now have programs or are developing programs that will assist landowners with the expense of replanting these little carbon factories on their private lands. These programs vary in their guidelines, so a landowner should contact the state NRCS office where their property is located. There are private companies that will pay carbon credits to landowners who plant and maintain a sustainable tree stand.



**Author: J. Paul Jeffreys, Ph.D**

Alabama & Mississippi,  
Manager Special Projects &  
Sustainability

## Making Order Confirmation Easier for You!



ArborGen is now using DocuSign for all order confirmations. Soon you will be receiving electronic documents allowing you to quickly and conveniently sign to acknowledge and approve your order. Watch your email for DocuSign to make sure you receive your form.

## What’s Happening: Seed Stratification

We’re busy prepping the seeds to plant this season’s seedlings.



**Client Results**



**MCP® at 9 years**  
Battleboro, NC



**MCP® at 2 years**  
Billingsley, AL

[See More Client Results](#)

[Click here for the previous edition of TreeLines.](#)

Need a trusted partner to guide the way? Get in touch with a Reforestation Advisor to explore your options!



**Austin Heine**  
North Carolina and Virginia  
910-660-3209



**Jason Cromer**  
Florida Gulf Coast, South  
Alabama, Georgia



**Greg Hay**  
Arkansas, Northern  
Louisiana, and Oklahoma



**Shannon Stewart**  
Eastern Texas, Southern  
Louisiana



229-310-0648

501-350-4217

936-239-6189

[See More](#)

[See More](#)

[See More](#)

[See More](#)



**Paul Jeffreys, Ph.D.**

Alabama & Mississippi,  
Manager Special Projects &  
Sustainability  
205-712-9582

[See More](#)



**Kylie Burdette**

South Carolina, U.S. Sales  
Manager  
864-650-4454

[See More](#)

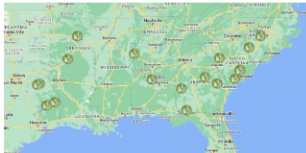


**Jason Watson**

Director, U.S. Sales  
404-840-7489

[See More](#)

### FIND AN ADVISOR OR NURSERY



- Blenheim, SC Nursery
- Taylor, SC Nursery
- Bellville, GA Nursery
- Shellman, GA Nursery
- Selma, AL Nursery
- Bluff City, AR Nursery
- Bullard, TX Nursery
- Livingston, TX Distribution Point
- Jasper, TX Nursery

### GET IN TOUCH

2011 Broadbank Court  
Ridgeville, S.C. 29472

888.888.7158

[info@arborgen.com](mailto:info@arborgen.com)



[Request Catalog](#)

### QUICK LINKS

- Find a Reforestation Advisor
- ArborGen TreeLines - News & Updates
- Join Our Team
- Helpful Resources
- About ArborGen
- In the News
- Press Releases
- Search Website

[Get TreeLines](#)