



### Maximize Growth and Yield on Your Land – Getting the Most Out of Your Investment

Our Reforestation Advisors, who are both educated and experienced in forestry, have provided some recommendations to help ensure that your seedlings have the best chance of success. It's important to remember that you, as the landowner, play a crucial role in implementing these recommendations. Practicing good silvicultural methods will ultimately lead to a better return on your investment. We are committed to providing you with the support you need to succeed in your reforestation efforts, and our ArborGen Reforestation Advisors are available to guide you every step of the way.

**Make Sure:**

- A rapid root system is established throughout the soil profile.
- Terminal buds are above the competing vegetation and animal browse line.
- Quick-growing seedlings (height and stem diameter) are large enough to withstand insects and other damaging agents such as fires, cows, deer, wind, hail, ice, and snow.



ArborGen MCP® 2.0 Coastal containers are being planted near Trenton, NC.

### Ten Proven Strategies for Seedling Success

1. **Apply herbicides** to control weeds – the #1 enemy in a Pine seedling's first year. Inspect the stand in late May or early June for a new crop of weeds, even if you applied herbicide in late winter or early spring.
2. **Seeking professional advice** regarding herbicide use is essential. They can help you identify which herbicides are suitable for your location and how to achieve your desired level of control. Their expertise can also guide you in choosing the correct application method and time, ensuring the best possible outcome for your seedlings.
3. **Inspect the planting site** for emerging Pine from seeds left in place after harvesting. These are harder to control because you'll have to directly spray a herbicide onto the volunteer Pine seedlings without getting herbicide onto your newly planted seedlings.
4. **Monitor the site** closely for signs of heavy deer browse on winter shrubs and vines near seedlings. Sites overpopulated with deer will browse on Pine seedlings if no better food source exists.
5. **Inspect your seedlings** periodically to ensure no pales weevil activity is present. Look for stem girdling at the soil line on seedlings that show symptoms of yellowing or wilting. Stands planted within six months after harvesting could be susceptible to severe pales weevil problems.
6. **Protect the terminal bud** (located at the end of a limb marking the end of that year's growth) from tip moth larvae. The best time for treatment is at planting. Seedlings planted and treated after February 1st may not have adequate time to absorb enough chemicals to protect against the first cycle of tip moth larvae.
7. **Test the soil** for phosphorous (P) with a local lab and follow their recommendations for fertilization at the time of planting.
8. **Fertilize with phosphorous** if you have coarse, sandy soil or if scalping is performed before or during planting. Dormant season foliage analysis can help diagnose when nitrogen fertilization may be needed.
9. **Protect your seedlings** from getting trampled by domestic animals such as cattle. Excluding domestic animals from your newly planted forest for the first two years is best. If you allow domestic animals in your new forest, keep all feed troughs and mineral supplement areas outside the newly planted area.
10. **Monitor seedlings** throughout the summer for issues that may arise and notify your ArborGen Reforestation Advisor immediately if you see unhealthy seedlings.

[Find Your Reforestation Advisor](#)

### High Demand for Seedlings: Order Early



[Order Your Seedlings Now](#)

You hardly sat down to catch your breath from planting and get a call. It's your [ArborGen Reforestation Advisor](#) (RA), ready to discuss your plans for the next planting season.

You think they are crazy – and maybe they are a little – but our RAs don't want you to miss out on getting the best-performing tree for your land based on what you want to achieve.

Using their forestry expertise and access to the most advanced genetics in the industry, they can review your plans to ensure you are getting what you need to get the results you expect.

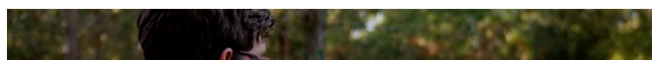
The demand for seedlings is soaring, with orders surpassing last year's figures. [ArborGen MCP®](#) is rapidly emerging as the seedling of choice for numerous landowners and consultants. Why? Because it offers the most extensive options at the final harvest, ensuring the best returns on your investment.

Your RA can meet with you to explore your options with OP and MCP [using our proprietary seedling calculator](#).

Hardwoods are witnessing a surge in demand. The carbon credit markets are now active in afforestation, with carbon companies actively seeking opportunities to expand their plantings. The key to capitalizing on these trends? Early planning. Don't wait; start planning now!

### Customer Success Story

Perry Clements is a forestry consultant with Rozier & Associates in Bainbridge, Georgia. For over ten years, MCP® has been their seedling of choice for growth consistency.





## ArborGen Shellman Nursery Tour

Join us for a tour of our Shellman, GA Nursery and a presentation on combining genetics and silviculture to maximize forest productivity and returns. The tour covers:

- Genetics Overview and Product Development
- Silvicultural Best Practices
- Seedling Handling and Care
- Seedling Revenue Calculator Demo
- Crop Visit and Genetics Demo

### CEEs Applied For

Click on the button below to see the agenda and RSVP. We hope to see you there!

[Register Now](#)

## Client Results



**30' MCP® 2.0 @ 5 years**  
Columbia, MS



**OP Elite @ 2 years**  
Clark County, AR

[See More Client Results](#)

[Click here for the previous edition of TreeLines.](#)



Download a Copy of this TreeLines Edition

Need a trusted partner to guide the way? Get in touch with a Reforestation Advisor to explore your options!



**Austin Heine**  
North Carolina and Virginia

910-660-3209

[See More](#)



**Jason Cromer**  
Florida, Georgia

229-310-0648

[See More](#)



**Greg Hay**  
Arkansas, Northern Louisiana, and Oklahoma

501-350-4217

[See More](#)



**Shannon Stewart**  
Eastern Texas, Southern Louisiana

936-239-6189

[See More](#)



**Paul Jeffreys, Ph.D.**  
Alabama & Mississippi  
Manager Special Projects & Sustainability  
205-712-9582

[See More](#)



**Kylie Burdette**  
U.S. Sales Manager  
Reforestation Advisor  
South Carolina  
864-650-4454

[See More](#)



**Jason Watson**  
Director, U.S. Sales

404-840-7489

[See More](#)

#### FIND AN ADVISOR OR NURSERY



- Blenheim, SC Nursery
- Bellville, GA Nursery
- Shellman, GA Nursery
- Selma, AL Nursery
- Bluff City, AR Nursery
- Bullard, TX Nursery
- Livingston, TX Distribution Point
- Jasper, TX Nursery

#### GET IN TOUCH

2011 Broadbank Court  
Ridgeville, S.C. 29472

888.888.7158

info@arborgen.com



[Request Catalog](#)

#### QUICK LINKS

- Find a Reforestation Advisor
- ArborGen TreeLines - News & Updates
- Join Our Team
- Helpful Resources
- About ArborGen
- In the News
- Press Releases
- Search Website

[Get TreeLines](#)